

A NOTE FROM THE PRESIDENT

“128th Kansas State Shoot”

“The plan is for great things to happen and you can be a part of it!”

Every year because of you “The Shooters” that support Kansas great things happen. Think I’m stretching the truth? Lets look back a little:

Since 2004 your KTA has built a complete new trap line with new concrete houses, walkways, and Pat Traps.

A new Hall Of Fame building.

A new Hall Of Fame Museum.

A new state of the art restroom/shower house facility which can double as a storm shelter (6 sides concrete) in the event of an emergency.

The addition of 26 more 50 amp camper spots.

A clubhouse renovation.

And the reason this has all been possible is because of you, our loyal shooters who support the KTA and participate in the KTA shoots year after year after year!

When you travel around let us be the standard that you compare to, from the quality of the Facility, to the presentation of the targets, to the Down Home Friendly Midwest people who just want to make you, our customer and friend happy.

We know when you attend a shoot you have a choice of where to spend your hard earned money and we are so excited that year after year more of you keep choosing the KTA.

As always we appreciate our sponsors support, White Flyer, Crow Shooting Supply, Bruce Davis Construction, Crown Distributing, The Taylor Companies, Friends of The KTA, and Bock Farms just to mention a few.

All American Points are maxed out - Last 5 days, In & Out of State Trophies, the most All American Points available will be given.

\$10,000.00 added again this year divided equally between in and out of state shooters to Class and Championship event trophy winners.

\$1000.00 White Flyer Shootout Tuesday night.

Clever Shootout Thursday following the days events

Chicken Marys Chicken on Thursday night for all shooters and their families.

Hall Of Fame Banquet Friday night, a wonderful time to relax a little and socialize with your friends and fellow shooters.

Saturday Night Supper.

I cant close this note without mentioning the tremendous loss we all feel here in Kansas with the passing of some of our friends and shooters. 2018 saw us lose Gary Brehm, Roger Smith and Larry Taylor all to Cancer; I’m sure there are others I should mention but please know that in our hearts we will think of them always.

The help we have at the KTA is absolutely the best! Believe me when I tell you each individual has so much pride and so much dedication to see the KTA succeed it makes my job very very easy.

Thanks Again to you shooters who continue to make the KTA “The Premier Shooting Facility In The Midwest!”

Enjoy the 128th Kansas State Shoot!

Rob Taylor, KTA President

**ALL PRE-SQUADDING
DONE BY:**

**Kansas Trapshooting Association, Inc.
- and -**



**To pre-squad for the 2018
Kansas State Shoot, go to:
www.presquad.com**



6344 Tuttle Creek Blvd
Manhattan, KS 66503
[785] 587-8777

2 Miles North of Manhattan on Hwy. 24

WELCOME

We welcome you to the 128th Kansas State Shoot! Good things are happening again this year. White Flyer Shootout, Clever Shootout, 10K added money, Zerny's Chicken, and a perfectly set White Flyer Target courtesy of Jim Moody, Clint Watson and company.

Please come join us for the 128th Kansas State Shoot. Let any director or officer know if we can do anything to make your shoot more enjoyable.

The Officers and Directors of the KTA

2018 OFFICERS & DIRECTORS

President	Rob Taylor	785-539-4392	Cell:785-761-6200
Vice-President	Gerald Mies		Cell:316-258-6154
Secretary / Treasurer	Sandra McAllister	620-348-5325	Cell:620-546-3519
ATA Delegate	David Rhoads	785-776-0506	Cell:785-565-8282
Tournament Director	Jim Moody		
Eastern Zone Directors	John Maike, JR	785-844-2347	Cell: 785-855-2347
	Darrell Hosler	913-897-4455	Cell: 816-809-7181
	Jesse Secrest		Cell: 913-634-4735
	Kevin Maloan		Cell: 785-304-2422
Western Zone Directors	Carey McAllister	620-348-5325	Cell:620-546-3127
	Shawn Massey		Cell:620-952-1547
	Roy Rathbun		Cell:785-623-9477
	Juania Gale		Cell:785-543-4218
Central Zone Directors	Gerald Mies		Cell:316-258-6154
	Charles Spidell		Cell:785-263-4421
	Fred Smith	785-457-1055	Cell: 785-587-4996
	Dean Dierksen		Cell:785-477-0126
Youth Director	Kevin Maloan	913-422-5063	Cell: 785-304-2422
Computer Services	Sandra McAllister		
Target Setting	Jim Moody and Clint Watson		
Photographer	Kristine Puthoff, Circle P Photography		
Scorers & Setters	Janet Walsh		

ATA Refund \$4031.00

This certifies that the Kansas Trapshooting Assoc., Inc. has been authorized to hold a registered shoot at the KTA Trap Park in Wichita, Kansas on

June 4, 5, 6, 7, 8, 9, 10

THE AMATEUR TRAPSHOOTING ASSOCIATION



Mention
KTA when
reserving
your rooms!

2250 N. Greenwich Road
Wichita, Kansas 67226
(316) 927-3888

We are located across the street from the new Cabela's.

We are pleased to be the KTA host hotel for 2018!



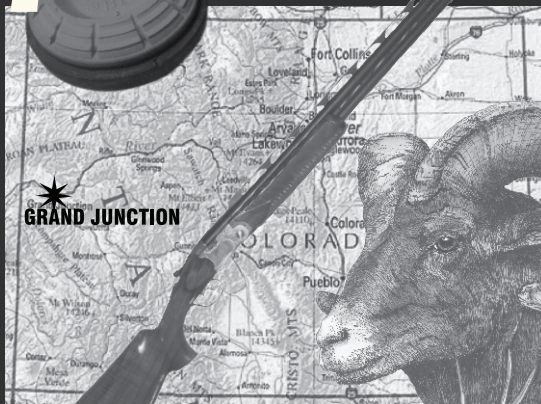
\$89.00 rate on our studio suites
\$99.00 on the one bedroom suites which include:

- Free daily Breakfast buffet
- Evening social hour Monday, Tuesday and Wednesday
- Complimentary guest laundry
- Outdoor patio pool
- BBQ grills
- Full kitchen
- High speed internet
- Business center
- Theatre room
- Work out facilities and much more.....

We are located across the street from the new Cabela's.

ALL ROADS LEAD TO THE

97th



COLORADO STATE SHOOT

JUNE

13, 14, 15, 16, 17, 2018

Hosted by the

GRAND JUNCTION TRAP CLUB

116 32 Road

Grand Junction, Colorado 81502

P.O. Box 334

(970) 245-0780

7 Lighted Fields, 12 Total Fields with Pat Traps & Voice Pulls

2 Full Time Practice Traps Skeet and 5 Stand Also Available

62 RV Sites, Unlimited Dry Camping, RV Waste Removal for Additional Fee



ATA REGISTERED SHOOTS

March 18

April 14 (Big 50)

April 22

May 26, 27, 28

June 9 - (Big 50)

June 13-17 - Colorado State Shoot

July 15

August 11 - (Big 50)

September 14-16 - State Zone Shoot

September 30

October 13 - (Big 50)

GENERAL INFORMATION

ATA rules will govern all points not otherwise provided for herein. Interpretation of this program will be made by the KTA Board of Directors and their decision will be final. This is an invitational tournament and we reserve the right to reject or refund any entry which in our judgement would be detrimental to this shoot.

The management reserves the right and authority to disqualify any contestant who behaves in a disorderly manner, or who handles his/her gun dangerously, and to remove contestant from further participation in any competition in which he/she may be entered.

The Kansas Trapshooting Assn., Inc. or its staff will not be responsible for any accident or for any loss of property.

No one, with exception of a referee, who is not an authorized scorer, will be permitted to pull or score for anyone.

FEES

A KTA fee of \$2.00 per 100, an ATA fee of \$3.00 per day, and Kansas sales tax of \$2.44 per hundred will be collected.

PRE-SQUADDING INFORMATION

Pre-Squadding is advised and available again this year online at presquad.com. To Pre-Squad go to www.presquad.com

Classification

David Rhoads, Kansas ATA Delegate

The clubhouse will be open Monday 12:00 P.M. to 5:00 P.M. for the purpose of taking entries and squadding.

The Handicap and Classification Committee will handicap and classify all members as well as nonmembers who do not have ATA cards. ATA average card must be posted to date of the shoot and presented to the Handicap and Classification Committee for classification before entry can be made. If you do not have a card, the Handicap and Classification Committee will assign your yardage. **Kansas Shooters: Please bring your KTA membership card or paid receipt for Kansas membership.**

Shooters will be classified on average and known ability as follows:

Singles

98% and over	AAA
96.25% and under 98%	AA
94.75% and under 96.25%	A
93% and under 94.75%	B
90% and under 93%	C
Under 90%	D

Doubles

96% and over	AAA
92% and under 96%	AA
89% and under 92%	A
86% and under 89%	B
82% and under 86%	C
Under 82%	D

Class Advance Rules

High scores in Class regardless of category will be advanced 1 class. It is also the shooter's duty to see that his/her handicap card is properly punched. **Class advances will start with Event 4 and Event 6.**

WITHDRAWALS & RE-SQUADDING

No refunds will be made to a shooter for withdrawal or scratching from an event unless the event is cancelled. If a shooter misses his or her squad, there will be a \$20.00 re-squadding fee. NO EXCEPTIONS.

WATCH FOR YOUR SQUAD

The first event of the day will start at the time listed. Be on the grounds ahead of the time and watch for your squad. Your squad cannot wait more than three minutes for you to take your place. If you are not there within the allotted time, your name will be scratched and your squad will proceed without you. You will not be paced.

CHECK YOUR SCORE

Watch your score--**it cannot be changed after leaving shooting post.** The official referee assigned to each trap is there to see that your proper score is recorded. In the absence of a separate referee, the official scorer becomes both referee and scorer. Call any discrepancy to their attention immediately. Refer to ATA official Trapshooting Rules Book. The referee's decision is final.

TIES AND SHOOT-OFFS

All ties will be carried over by sub-event to next like event of the shoot except for handicap events. All shootoffs will be conducted by zone directors as follows: Tues.-Western, Wed.-Central, Thurs.-Eastern, Sat.-Western, Sun.-Central.

SAFETY (ATA Rule Sec. 4, I10)

All guns must have the action opened and contain no live or empty shells at any time, except while the shooter is on the firing line. A break-open gun's action may be closed when it is in a gun rack but it shall not contain a live or empty shell. Repeat offender(s) of these Rules will be given a 30 day suspension upon a second violation of these Rules; a third violation of these Rules will result in a 90 day suspension; and further violations will be reviewed by the Executive Committee for further disciplinary action.

GUNS AND AMMUNITION (ATA Rule 13, F)

Any shooter violating any of these Rules shall be disqualified from competition in accordance with these Rules. Any such violator shall be referred to the Executive Committee for possible further disciplinary action.

A contestant cannot use:

A gun with a chamber larger than 12 gauge. Guns of smaller gauges are permissible in registered and tournament shooting, but no competitive consideration shall be given in recognition of that fact for handicap and classification purposes. A contestant may not use a gun capable of chambering more than one gauge of shells at the same time. For example, chambering 12 gauge and 20 gauge shells in the same gun at the same time is prohibited. Any load with a velocity greater than 1290 FPS (Feet Per Second) with maximum shot charge of 1-1/8 ounces, or 1325 FPS with a maximum shot charge of 1 ounce, or 1350 FPS with a maximum shot charge of 7/8 ounces, as measured in any individual shotshell. These velocities are maximum and no individual shotshell shall exceed these limits for the designated shot charge. In addition, no load containing more than 1-1/8 ounces (31.89 grams) or any shot larger than Number 7-1/2 can be used. Shot charges are maximum and no charge may exceed the charge amount by more than 3%.

Any shell loaded with black powder.

CHALLENGE AND PROTEST (ATA Sec. 13, F)

Any contestant may challenge the load of any other contestant. On receipt of a challenge, the management shall obtain a cartridge from the challenged party, and if after examination, the management finds contestant violated the ATA rule, he or she may be disqualified.

CAMPERS AND VENDORS

Electrical and water hookups in the area east of the clubhouse are available for campers. Please be sure your electric cords are heavy enough to carry sufficient current. Camping spaces will be reserved, contact Sandra McAllister at 620-546-3519. Camping spaces are \$30.00 Per Day or \$330.00 per year. Please pay at the cashier window or pay on our web site www.shootkta.com. Camping contract is available on our web site and needs to be filled out and returned.

Vendor rates are as follows: Prepaid Yearly Vendor fee - \$150.00, Daily Vendor Fee - \$50.00 Vendor staying 3 or more days - \$30.00 per day. For Vending reservations contact Sandra McAllister 620-546-3519 – cell. **Parking lot sales will not be allowed at anytime.** Violators will be removed immediately.

The shower house will open Monday, June 4th.

SHIPPING INFORMATION

In the event you would need to ship something to KTA, use the following address:

KTA Trap Park
3432 East 117th Street North
Sedgwick, KS 67135

OPEN SHELL SALES

There will be a sufficient supply of popular brand shells on the grounds.

ANNUAL MEETING

The annual meeting of the KTA members will be held in the KTA Hall of Fame building at 8:00 A.M. Sunday, June 10 at which time the ATA Delegate and Alternate will be elected by ballot to attend the ATA meeting during the Grand American Tournament in August.

ATA DELEGATE DUTIES

1. Be present at the classification table during all KTA shoots.
2. Attend two meetings during the Grand American Tournament and assist with shoot-offs two different nights.
3. The ATA delegate is a voting member of the KTA Board of Directors and helps to make decisions concerning the operation of the KTA.
4. The ATA delegate is chairman of the state handicap committee and 1,000 target reviews. All shooters' requests for a yardage reduction must be initiated through the ATA delegate.
5. The ATA delegate handles all complaints against shooters for rule violations, bad check, shooting from incorrect yardage, gun safety, and other actions by a shooter that could result in his/her suspension.
6. The delegate has responsibilities other than those listed above, and you should consider your candidate very carefully and consider only responsible and dedicated people for this office.

KANSAS TRAPSHOOTING ASSOCIATION SCHOLARSHIP PROGRAM

SCHOLARSHIP AMOUNT: \$1000.00

The Kansas Trapshooting Association will provide up to four (4) \$1000.00 scholarships per year. These scholarships will be paid to the recipient's college or continuing education provider at \$500.00 each semester.

ELIGIBILITY: Enrolled students or students applying for initial enrollment to continuing education or college curriculum are eligible. Applicants must be active members in good standing of both the Amateur Trapshooting Association and the Kansas Trapshooting Association.

REQUIREMENTS OF APPLICANTS:

(A) Scholastic:

- 1) Complete Scholarship Personal Data Application
- 2) Write short essay, 100 words or less regarding reason for applying
- 3) Attach letter of recommendation from one of the following:
 - * Certified Instructor
 - * ATA Delegate
 - * Guidance Counselor or Advisor

(B) Trapshooting:

- 1) List years shot, major wins, records, etc.

(C) Students applying for 2nd year and beyond scholarship's must be maintaining a 2.0 GPA or better.

(A copy of your latest transcript is required with application)

Students applying for 2nd year and beyond scholarships must compete in the Kansas State Singles and be prepared for a shoot-off immediately following to determine scholarship winners. Initial scholarship applicants are encouraged, but not required to compete in the Kansas State Singles Championship (High School Seniors). All scholarship winners will be announced and recognized at the Kansas State Trapshooting Association annual meeting held Sunday morning at 8:00 am during the Kansas State Shoot.

Application due date: June 1, 2018

(If supporting documents are not available by the application due date, those documents should be sent as soon as available)

Contact the Kansas Trapshooting Association for additional information.

Rob Taylor, President 785-761-6200

Submit Completed Application to: KTA, 959 SW 10th Street, Macksville, Kansas 67557

The KTA is in receipt of a grant from the NRA foundation for the KTA youth program. Please support your local chapters of the Friends of NRA at the local banquets where monies are raised for the programs supporting women and youth around the state.

YOUTH SHOOTER INFORMATION

Juniors and Sub-Juniors may shoot "targets only" for \$20.47 (plus Kansas Sales Tax \$1.53 = \$22.00) per hundred and be eligible for trophies, but will be charged full price on all events if they play any options. (Does not include Junior Gold)

FREE SHELLS - For the Kansas Singles Championship. Through the generous support of some dedicated shooters, 8 boxes of 12 or 20 gauge shells will be furnished to ALL youth shooters (Sub Jr and Jr) INCLUDING NON-RESIDENTS. You must present your paid entry receipt for this event to claim your shells at TCSP/Santa Fe Vendor spot #1 just west of clubhouse.

AIM INFORMATION

Coaches must register the squads with the ATA AIM Program before pre-entry and cashing in with the KTA to be eligible to compete in the AIM state championships, held in conjunction with the Kansas State Singles Championships on June 9, 2018.

Print the AIM State Championship Team Registration from www.aim4ata.com for pre-entry to the state shoot. This form is found under "Forms & Handbook".

Pre-entry & cashing in is required by May 30, 2018 for the 200 bird event. Rules pre-entry of the AIM Program require that youth shooters must have 300 registered single targets this shooting year, prior

to competing in the State Championship. Each squad member is required to have 500 registered ATA singles targets prior to entering the AIM Grand Championships.

Competing in the Kansas State Singles Championships will complete the 500 target requirement for entering the AIM Grand Championships at Sparta, IL in August. This event will run concurrently with the Kansas Singles Championship starting at 8:00 a.m. You will be shooting on 5 banks at Ark Valley Gun Club. You will shoot 100 targets on one trap. If you have shot the required 300 registered singles at a Kansas Trap Club during this shooting year, your KTA membership is up to date. However, if the targets have been registered out of state, you will need a current KTA membership, which is \$11.00 annually.

AIM and ATA memberships will have been paid to the ATA when the coach registered your squad.

When completing the pre-entry form, **please enclose a photo copy of current year average card (front and back) up to date with all targets shot this current shooting year.** Entry fees for shooters under 18, will be \$51.00 (\$44.00 for targets plus \$7.00 ATA/KTAfees.) Entry fees for shooters 18 & over will be \$77.00 (targets \$70.00 and \$7.00 ATA/KTA fees.) Shooters will be charged full price if they play any options.

Make checks payable to the **Kansas Trapshooting Association.** Mail to Kevin Maloan, Box 220 Garnett, KS 66032. Squad assignments will be sent by mail to the coaches the week before the championships.

KTA YOUTH SHOOTING CHAMPIONSHIPS

WHAT: KTA YOUTH SHOOTING CHAMPIONSHIPS

WHEN: JUNE 9TH, 2018

WHERE: KANSAS STATE TRAPSHOOT @ KTA HOMEGROUNDS, 3432 E. 117TH STREET, SEDGWICK, KS (NORTH OF WICHITA, KS)

WHO: ANY YOUTH SHOOTER, DOES NOT HAVE TO BE A MEMBER OF THE ATA AIM PROGRAM OR SCTP to be eligible for these special trophies.

INDIVIDUAL TROPHIES WILL BE AWARDED TO 1ST, 2ND, & 3RD PLACE
IN THE FOLLOWING AGE CATEGORIES:

UP TO AGE 13, 14-15 YEARS, 16-17 YEARS, 18-23 YEARS

TEAM TROPHIES (1ST, 2ND, 3RD PLACES) WILL BE AWARDED TO ANY K – 12 SCHOOL AGE TEAM AND ANY COLLEGE AGE 18-23 TEAM

You do not need to be attending the same school or college nor be a member of the same gun club. Get a squad of friends together to compete and have fun at the Kansas State Shoot.

The only criteria is you must be a current ATA member and if Kansas Resident a KTA member and registration must be received by May 30, 2018.

SUB-JUNIOR & JUNIOR: ATA membership is \$12.00, KTA membership is \$11.00 (which is ½ price). 200 targets will be \$44.00 plus ATA daily fee of \$3.00 and KTA target fee at \$4.00 for a total of \$51.00 AND you will get 8 boxes of shells FREE to shoot this event at the Kansas State Trap Shoot. (ATA membership needs to be paid to the ATA.)

JUNIOR GOLD: ATA membership is \$12.00 and KTA membership is \$22.00. 200 targets will be \$70.00 plus ATA daily fee of \$3.00 and KTA target fees at \$4.00 for a total of \$77.00. (ATA membership needs to be paid to the ATA.) You will shoot on 5 Banks at our adjoining club (Ark Valley) just east of the KTA grounds. Shooting starts at 8:00 a.m. and you will shoot 100 targets on a field. Be ready to shoot when your squad is scheduled. Pre-registration is a must.

Send registration form along with a copy of your ATA/KTA membership card and average card for classification and a check made payable to **KTA** for your entry fees to: KTA Youth Director, Kevin Maloan, Box 220, Garnett, KS 66032 by MAY 30th. You will be notified before the shoot as to your squad number. Please arrive early enough that you can get your shells and be ready to shoot when your squad is up.

If you have any questions, I can be reached at the following:
 Phone: 785-304-2422 or my email is kevinmx8@gmail.com. After the shoot starts you can call the KTA at 316-755-2933 for information.

Hope to see you there.
 Kevin Maloan,
 KTA Youth Director

KANSAS STATE TRAPSHOOT YOUTH CHAMPIONSHIPS ENTRY

Name:	ATA#	
Address:	Date of Birth:	Age:
Telephone:	Email:	
Shell preference: 12 ga. _____ or 20 ga. _____		
Lady: _____ JR: _____ SJ: _____ JR. GOLD: _____		
Individual _____ & /or Team _____ Post Preference: _____		
I would like to shoot with the following shooters on a team. Please indicate post preference for each shooter.		
	Post Preference:	
	Post Preference:	
	Post Preference:	
	Post Preference:	

Each squad member must submit a pre-registration entry.

Include a copy of your ATA/KTA membership card and your ATA average card.

If dues are not current, please include with your payment for targets, any membership fees due.

Entry fees are as follows:

Sub-Juniors & Juniors

Entry Fee \$44.00
 ATA Daily Fee \$ 3.00
 KTA \$2.00/100 Fee \$ 4.00
 Total Target Cost \$51.00

Junior Gold

Entry Fee \$70.00
 ATA Daily Fee \$ 3.00
 KTA \$2.00/100 Fee \$ 4.00
 Total Target Cost \$77.00

Sub-Juniors & Juniors - ATA membership \$12.00 & KTA membership \$11.00
Junior Gold - ATA membership \$12.00 & KTA membership \$22.00

MAKE CHECKS PAYABLE TO THE KTA. Send payment, forms & copies of membership to: KTA Youth Director, Kevin Maloan, Box 220, Garnett, KS 66032 Deadline is May 30, 2018.

ZONE TEAM RACE

A zone team contest is held based on Event 12. Zone teams will consist of the five class winners from their respective Zone Singles Championship (Zone Champion may not be a member of the zone team). In the event a member cannot or elects not to be on the team, his Zone Directors must appoint a replacement of the same class before Event 12 commences. Twenty dollars will be awarded to each member of the winning team. Zone Champions will compete for \$25.00.

STATE SHOOT ATTENDANCE PIN

A State Shoot Attendance Pin will be available to the first 700 Entries.

JAYHAWK PIN

An exclusive designed "Jayhawk Pin" will be awarded to shooters breaking 100 straight targets in the State Shoot. This pin is not given at any other shoot. **Carry-overs are not permitted. Only one pin of each kind will be awarded to a shooter.*

BUFFALO PIN

To be awarded to anyone scoring 200x200 in Event 12 Kansas Singles Championship. This pin cannot be won in any other event. **Carry-overs are not permitted. Only one pin of each kind will be awarded to a shooter.*

WILDCAT DOUBLES PIN

An exclusive designed "Wildcat Pin" will be awarded to shooters breaking 100 straight doubles targets in the State Shoot. This pin is not given at any other shoot. **Carry-overs are not permitted. Only one pin of each kind will be awarded to a shooter.*

SHOCKER HANDICAP PIN

A custom designed Shocker pin will be awarded to shooters breaking 100 straight handicap at any KTA shoot. **Carry-overs are not permitted. Only one pin of each kind will be awarded to a shooter.*

KTA PIN

This distinguished pin will be awarded to shooters breaking 100x100 or 200x200 in any registered event. **Carry-overs are not permitted. Only one pin of each kind will be awarded to a shooter.*

RULES & REGULATIONS

1. Should you win or tie for high in class in any 16 yard or doubles event (starting with Event 4 or Event 6) or earn yardage in any handicap event it shall be your duty to report to the handicap room and have your classification reviewed or yardage punched. Any shooter whose class or yardage is changed for any reason shall be considered to have been notified when the new class or yardage is posted on the bulletin board.

2. Any shooter failing to carry out rule #1, or who shoots in a class or yardage higher or lower than that assigned by the Handicap Committee will be subject to penalty and will not be eligible to share in any money division or trophy whatsoever.

3. CATEGORY SHOOTERS: At all tournaments where All American points will be awarded in any event, shooters may declare only one category (i.e. Lady I, Lady II, Sub-Junior, Junior, Junior Gold, Sub-Veteran, Veteran, Senior Veteran)

Note: Chair shooters are exempt from this rule. Any shooter who is tied for event Champion may shoot-off/carry-over for the Championship trophy. If a shooter fails in the championship trophy shoot-off/carry-over and has declared a special category at the time of classification, the shooter can fall back to the declared category. Any shooter who has declared a special category at the time of classification and whose score qualifies for any trophy in his/her declared category, will compete for the category trophy and not for place, class or yardage group. Any special category shooter, whose score does not qualify for a trophy in his/her category, may compete for place, class or yardage group trophies. Once any declarations have been made either by shooter or shoot management, the declaration is final and can not be changed. There shall be no exception to this rule. All Lady I, Lady II, Sub-Junior, Junior, Junior Gold, Sub-Veteran, Veteran and Senior Veteran must declare their special category at the time of classification in any registered tournament if they wish to compete as a category shooter. Without such declaration, the contestant will not be allowed to compete for the applicable category trophy for the duration of the tournament. No contestant will be allowed to declare or change a special declaration after firing his/her first shot. **There will be no exceptions to this rule.**

4. Each shooter who is entitled to receive money won during any event agrees that if such money is not received by him during the period of this tournament, a check in payment for the money won may be mailed to him at the address indicated by ATA records, and when so mailed the Club will not be liable in any manner whatsoever for any check lost, stolen, unclaimed, undelivered or otherwise not received by the shooter. **Final payoff will be posted on www.shootkta.com**

5. Shooters who do not have a total of 1000 16 yard targets registered with the ATA in the current and previous year shall be placed in Class B or higher at the discretion of the Classification Committee.

6. Shooters who do not have a total of 1,000 doubles targets registered with the ATA in the current and previous year shall be placed in Class B or higher at the discretion of the Classification Committee.

7. Assigned yardage applies during this tournament. Shooters not meeting target requirements will be assigned yardage or their handicap card yardage which ever is greater. Target requirements are at least a total of 1000 handicap targets registered with the ATA in the current and previous year. Assigned yardage for Junior, Junior Gold, Sub-Vet and adult males is 23 yards. Assigned yardage for Lady I, Lady II, Sub-Junior, Vet, and Sr.Vet shall be 20 yards. Known ability may also be applied by the Classification Committee.

8. Management will not be responsible for errors in scores after the options have been posted. Shooters should use the electronic bulletin board and the score board to check their scores and notify shoot management immediately if a discrepancy is noticed. **SCORES BECOME FINAL ONE (1) HOUR AFTER THE CONCLUSION OF THE EVENT.**

Pictures

Kristine Puthoff, Circle P Photography from Kansas, will be available to photograph winners and any other individual or squad photos.

ATA HALL OF FAME CONTRIBUTOR PURSE

The Trapshooting Hall of Fame also awards college scholarships and conducts a youth program to promote the future of trapshooting. Half of entry in this event is donated to the ATA Hall of Fame. (Trophy Donated BY Shamrock Leather.) We encourage you to participate.

ATA GUN CLUB LEWIS

GUN CLUB LEWIS OPTION – Deserving gun Clubs nationwide have benefited from the ATA Gun Club Fund for the past several years. These funds must be used to improve the facilities and programs at clubs and recipients are determined by the Executive Committee each year at the Grand American. Half of your \$20 entry into the Gun Club Lewis option will be placed in the fund and the other half will be paid out in a three Lewis Divisions, split 60/40%

SATURDAY NIGHT SUPPER

The KTA would like to invite you and your family to a dinner with all the trimmings on Saturday night. You must buy your ticket by NOON on Saturday, June 9th, at the cashiers window. Dinner price: \$6.00 per person.

50 TARGETS PER FIELD

All events, except Event 11, will be shot 50 targets per field. For example, Traps 8-1 and 9-1 will be starting fields of two separate banks. If you are scheduled to shoot on Bank 8, you will start on Field 8-1, shoot your first 50 targets there and your second 50 on 8-2. 5 targets per post.

Events 1-10 & 12-14 will start 10 squads, Event 11 WE WILL START 20 TRAPS AND SHOOT ALL 50 TARGETS PER TRAP 10 TARGETS PER POST. Kansas Youth Championship will run simultaneously with Event 12 at Ark Valley Gun Club starting 5 traps and shooting 100 per trap.

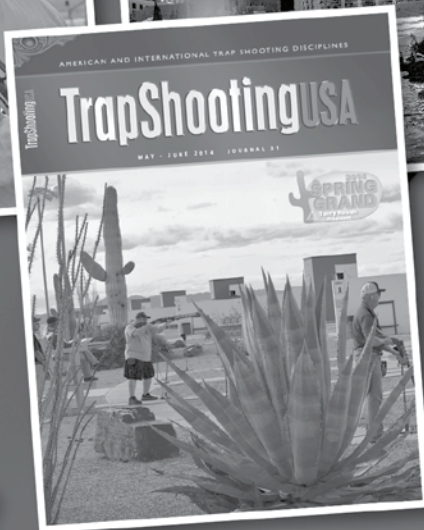
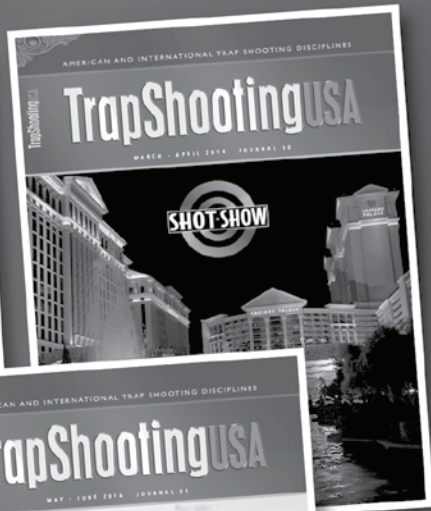
EMPTY HULLS

Empty hulls on the ground are property of the Kansas Trapshooting Association.

CREDIT AND OR DEBIT CARD

Credit or debit cards may be used for targets and daily fees only.
(NO OPTIONS)

WE KNOW WHAT IT TAKES TO PRODUCE A REALLY GREAT TRAP MAGAZINE!



**ORDER
YOUR
REGULAR
SUBSCRIPTION TODAY**

www.trapshootingusa.com

Monday, June 4, 2018

MARATHON DAY

Starting at 12:00 P.M.

Shoot as many 100 target events as you wish as long as we have the minimum number of shooters (3) per 100

Singles – Handicap – Doubles

\$26.00 per 100 + fees less than 400

\$24.00 per 100 + fees 400 or more

NO TROPHIES - NO OPTIONS

Everybody from everywhere trades and saves at

Gim CLARK
JUNCTION CITY
CHEVROLET - CADILLAC

Easy to find off I-70, between exits 295 & 296 in Junction City!
238-3141

CLARKCARS.COM

**Ernsting's, Inc.**
Radiator Sales & Service

180 S.E. 100 Ave. Ellinwood, KS 67526

620-564-2793 800-452-2712

Guy Ernsting, Owner Brent Schartz

Again this year White Flyer Target Company has supplied the trophies for College Mascot Day. Along with providing the trophies White Flyer will award **The White Flyer \$1000.00** to the three best shooters from tonight's White Flyer 1000 shootout.

Tuesday, June 5, 2018

EVENT NO. 1

SHOCKER SINGLES



SPONSORED BY



Starting at 9:00 A.M.

100 16-YARD TARGETS

Entry. \$32.56

~ CLASS OPTIONS ~

Class Purse (60-40) 10.00

50's 5.00 per 50 (2) (60-40) 10.00

Lewis Class - 3 Classes (60-40) 20.00

ATA Gun Club Lewis. 20.00

Split 50/50 gun club fund/shooter

Three divisions 60/40

Open -14-Trophies

Class AAA-AA-A-B-C-D

High Lady I

High Lady II

High Junior

High Junior Gold

High Sub-Junior

High Sub Veteran

High Veteran

High Senior Veteran



EVENT NO. 2
JAYHAWK HANDICAP
 SPONSORED BY



100 HANDICAP TARGETS

Entry \$32.56

~ OPTIONS ~

50's 10.00 per 50 (1-2,2-3,3-4) (50-30-20)	30.00
Yardage Group Purse (4) (50-30-20).	20.00
Purse - Total 100 (40/30/20/10).	20.00
Lewis Class - 3 Classes (60-40)	20.00
ATA Gun Club Lewis	20.00
Split 50/50 gun club fund/shooter	
Three divisions 60/40	

TROPHIES

Open - 14 Trophies

- Champion
- Runner-up
- Winner Each Yardage Group
(18-21.5) (22-24.5) (25-26.5) (27)
- High Lady I
- High Lady II
- High Junior
- High Junior Gold
- High Sub-Junior
- High Sub Veteran
- High Veteran
- High Senior Veteran



EVENT NO. 3

WILDCAT DOUBLES

SPONSORED BY



50 PAIR DOUBLES

Entry \$32.56

~ CLASS OPTIONS ~

Class Purse (60-40) 10.00

50's 5.00 per 50 (2) (60-40) 10.00

Lewis Class - 3 Classes (60-40) 20.00

ATA Gun Club Lewis 20.00

Split 50/50 gun club fund/shooter

Three divisions 60/40

TROPHIES

Open - 14 Trophies

Class AAA-AA-A-B-C-D

High Lady I

High Sub-Junior

High Lady II

High Sub Veteran

High Junior

High Veteran

High Junior Gold

High Senior Veteran

WHITE FLYER \$1000.00

You MUST shoot at least two of the three events to be eligible.

We will draw a number between 0-9 for each event, shooters whose last number in their score is a matching number will then be placed in another drawing and a total of 10 shooters will be eligible to shoot for the **White Flyer \$1000.00**. Shooters will shoot from their ATA yardage.

3 winners paid as follows:

1st Place \$500.00 - 2nd Place \$300.00 - 3rd Place \$200.00

You MUST shoot at least two of the three events to be eligible!

A Special Thank You from the Shooters
of Kansas to White Flyer, Phil Murray Sales Mgr.

Wednesday, June 6, 2018

EVENT NO. 4

HARLAN CAMPBELL JR. SINGLES

Starting at 9:00 A.M.

100 16-YARD TARGETS

Entry \$32.56

~ CLASS OPTIONS ~

Class Purse (60-40) 10.00

50's 5.00 per 50 (2) (60-40) 10.00

Lewis Class - 3 Classes (60-40). 20.00

ATA Gun Club Lewis. 20.00

Split 50/50 gun club fund/shooter

Three divisions 60/40

TROPHIES

In State

14 Trophies

Class AAA, AA, A, B, C, D

High Lady I

High Lady II

High Junior

High Junior Gold

High Sub-Junior

High Sub-Veteran

High Veteran

High Senior Veteran

TROPHIES

Out of State

14 Trophies

Class AAA, AA, A, B, C, D

High Lady I

High Lady II

High Junior

High Junior Gold

High Sub-Junior

High Sub-Veteran

High Veteran

High Senior Veteran

generations of Craftsmanship

Wenig

Gunstocks LLC

Generations of Old World Craftsmanship combined with the highest quality woods from the world over are the basis for the unwavering standards of time proven excellence at Wenig Custom Gunstocks.

The highest quality at an affordable price is the Wenig difference. . .

Machine customers' wood, Machine inletted "do-it-yourself" Stocks. Various grades of wood for both shotguns and rifles.

**103 North Market
Lincoln, MO 65338**

**(660) 547-3334
Fax: (660) 547-2881**

**www.wenig.com
Email: gunstock@wenig.com**

EVENT NO. 5

HUNTER SECREST HANDICAP

100 HANDICAP TARGETS

Entry \$32.56

~ OPTIONS ~

50's 10.00 per 50 (1-2,2-3,3-4) (50-30-20).....	30.00
Yardage Group Purse (4) (50-30-20).....	20.00
Purse - Total 100 (40/30/20/10).....	20.00
Lewis Class - 3 Classes (60-40).....	20.00
ATA Gun Club Lewis.....	20.00
Split 50/50 gun club fund/shooter	
Three divisions 60/40	

TROPHIES

**In State
14 Trophies**

- Champion
- Runner-Up
- Winner Each Yardage Group
(18-21.5) (22-24.5) (25-26.5) (27)
- High Lady I
- High Lady II
- High Junior
- High Junior Gold
- High Sub-Junior
- High Sub-Veteran
- High Veteran
- High Senior Veteran

**Out of State
14 Trophies**

- Champion
- Runner-Up
- Winner Each Yardage Group
(18-21.5) (22-24.5) (25-26.5) (27)
- High Lady I
- High Lady II
- High Junior
- High Junior Gold
- High Sub-Junior
- High Sub-Veteran
- High Veteran
- High Senior Veteran

Geary County Fish & Game Association

HIGHWAY 244 SPUR
JUNCTION CITY, KS 66441 • RANGE PHONE (785) 238-TRAP

SPORTSMAN'S ACRES
SHOTGUN, PISTOL & ARCHERY RANGES
Registered Shoots and Leagues
5 miles north of I-70 on US 77 - Highway 244 Spur
Open Saturdays and Sundays 1-5 PM and Tuesdays at 4:30 PM
Group Outing - Fundraisers Welcome

REGISTERED SHOOT DATES FOR 2018

MAY 20, 2018 - 10:00 A.M.
AUGUST 12, 2018 - 10:00 A.M.
JANUARY 1, 2019 - 10:00 A.M.

Operator: Shirley Allen • Highway 244 Spur, Junction City • 785-375-7305

Garden City Trap & Skeet Club

Garden City, Kansas

Located 1/2 mile N. of Third Street and US-50 Bypass
Beccy Landgraf - 620-272-4970

Open every
Wednesday @ 6:30
for
Trap and Skeet
Leagues
Special Shoots &
Corporate Events



Open 3rd
Sunday
of every
month at 1 p.m.

Garden City Trap & Skeet Club is a
PROUD
sponsor of the Garden City High School Trap Team!

EVENT NO. 6

HARLAN CAMPBELL, JR DOUBLES
50 PAIR DOUBLES

Entry \$32.56

~ CLASS OPTIONS ~

Class Purse (60-40) 10.00

50's 5.00 per 50 (60-40) 10.00

Lewis Class - 3 Classes (60-40) 20.00

ATA Gun Club Lewis 20.00

Split 50/50 gun club fund/shooter

Three divisions 60/40

TROPHIES

In State

14 Trophies

Class AAA-AA-A-B-C-D

High Lady I

High Lady II

High Junior

High Junior Gold

High Sub-Junior

High Sub-Veteran

High Veteran

High Senior Veteran

TROPHIES

Out of State

14 Trophies

Class AAA-AA-A-B-C-D

High Lady I

High Lady II

High Junior

High Junior Gold

High Sub-Junior

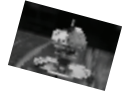
High Sub-Veteran

High Veteran

High Senior Veteran



FREE ICE CREAM SUNDAES



**CLUBHOUSE KITCHEN
3 PM - 5 PM
WEDNESDAY
COMPLIMENTS OF
MALOAN RESTUARANT
KEVIN MALON**

To pre-squad for the
2018 KANSAS STATE SHOOT

go to: www.presquad.com
Pre-squad will open Feb 23rd.

PRESQUAD
.com

Bruce Davis Construction

1201 Graphic Arts Rd
Emporia, Kansas 66801
(620) 342-5001

Bruce & Linda say "Good Luck Shooters!"



CROW

SHOOTING • SUPPLY™

**The First Choice for Wholesale
Firearms, Ammunition &
Reloading Supplies**

**Supplying Retailers, Gun Clubs & Ranges
Great Prices, The Best Selection
On Time, Every Time Delivery**

**800-264-2493
crowshootingsupply.com**



CLEVER DAY

at THE KTA

In cooperation with Clever Ammunition Co., and after the conclusion of Event 8, the Clever Handicap, we will draw a number between 0-9 from **EACH** event. Those shooters with the winning number will then be squadded by handicap yardage and will shoot 2 targets per post, 10 per round until 1st, 2nd, & 3rd place have been established.

Champion : 15 cases of Clever target loads - \$900 retail

1st Runner Up: 10 cases of Clever target loads - \$600 retail

2nd Runner Up: 5 cases of Clever target loads - \$300 retail

*A special thank you to
Clever Ammunition Co., Steve Crow,
General Manager, Crow Shooting Supply*

NEW MEXICO STATE SHOOT 2018
NMSTA RTC

Hosted by
NRA WHITTINGTON CENTER
Raton, New Mexico

**The NMSTA presents the 70th Annual
New Mexico State Shoot
May 22 - 27, 2018**

- 1,500 ATA Registered Targets.
May 22 thru 27 State Program - May 23 thru 27, HOA.
- Resident and Non Resident Trophies & Added Money.
- Over \$20,000.00 Added Money & Trophies.
- All Automatic Pat Traps & Voice-Activated Calls.
- Presquading on Presquad.com
- For RV & Camping Information - Call the NRA Whittington Center
1-800-494-4853 or (575) 445-3615

FOR PROGRAMS AND INFORMATION:
Please visit our web site www.nmtrap.com or
Contact Joel Schram at (575) 313-8725 or joelschram@msn.com



CLEVER DAY

Thursday, June 7, 2018

EVENT NO. 7

KANSAS STATE CLASS SINGLES

Starting at 9:00 A.M.

200 16-YARD TARGETS

\$1,500 FRIENDS OF THE KTA ADDED MONEY

Entry \$65.12

~ CLASS OPTIONS ~

Class Purse (60-40) 20.00

50's 5.00 per 50 (4) (60-40) 20.00

Lewis Class - 3 Classes (60-40) 20.00

ATA Gun Club Lewis 20.00

Split 50/50 gun club fund/shooter

Three divisions 60/40

TROPHIES

In State - 14 Trophies

Class AAA-AA-A-B-C-D

High Lady I

High Lady II

High Junior

High Junior Gold

High Sub-Junior

High Sub Veteran

High Veteran

High Senior Veteran

TROPHIES

Out of State - 14 Trophies

Class AAA-AA-A-B-C-D

High Lady I

High Lady II

High Junior

High Junior Gold

High Sub-Junior

High Sub Veteran

High Veteran

High Senior Veteran

\$1,500 FRIENDS OF THE KTA ADDED MONEY

Kansas State Class Singles

Kansas and Out of State Class Champion. . \$125 each

Awarded to high scores regardless of category.

CATERED CHICKEN DINNER WITH ALL THE TRIMMINGS

by Chicken Marys, Pittsburg KS. on Thursday Evening.

Compliments of the Taylor Companies Manhattan, KS.



Real Estate & Auction Service, Inc.

"We Sell Real Estate & Personal Property"
Specializing in: Farming, Ranching, Hunting & Gun Collections

Cell: 316-734-5132

316-775-2020

420 Walnut • Augusta, KS 67010

Web Site: www.chuckkorte.com

Real Estate Affiliated with BHHS PenFed Realty

"Good Luck Shooters"



CUSTOM COATING, INC.

"Your home-town powder coating solution."

(785) 587-9050

FAX 587-9060

MIKE & TRACEY SIMONS

616 S. DELAWARE AVE.

SUITE A

MANHATTAN, KS

66502-3973

mts@mtscustomcoating.com

www.mtscustomcoating.com

MIKE'S CELL:

(785) 587-7988

Premier CHIROPRACTIC & Wellness

324C Southwind Place
Manhattan, KS 66503

Office: (785) 320-5300

Call us for a FREE Consultation!

Dr. Dean Dierksen, D.C.

Dr. Matthew Stull, D.C.

EVENT NO. 8
CLEVER HANDICAP
100 HANDICAP TARGETS

Entry \$32.56

~ OPTIONS ~

50's 10.00 per 50 (1-2, 2-3, 3-4) (50-30-20) 30.00
 Yardage Group Purse (4) (50-30-20)..... 20.00
 Purse - Total 100 (40/30/20/10)..... 20.00
 Lewis Class - 3 Classes (60-40)..... 20.00
 ATA Gun Club Lewis 20.00
 Split 50/50 gun club fund/shooter
 Three divisions 60/40

TROPHIES

In State - 18 Trophies

Champion
 Runner-up
 Winner & Runner-up
 Each Yardage Group
 (18-21.5) (22-24.5) (25-26.5) (27)
 High Lady I
 High Lady II
 High Junior
 High Junior Gold
 High Sub-Junior
 High Sub Veteran
 High Veteran
 High Senior Veteran

TROPHIES

Out of State - 18 Trophies

Champion
 Runner-up
 Winner & Runner-up
 Each Yardage Group
 (18-21.5) (22-24.5) (25-26.5) (27)
 High Lady I
 High Lady II
 High Junior
 High Junior Gold
 High Sub-Junior
 High Sub Veteran
 High Veteran
 High Senior Veteran

**The Wilson Ranch is 10,000 acres located
 in Stafford County, KS.**



WILSON RANCH HUNTS

Logan McAllister
900 SW 70th Street,
Macksville, KS 67557
620-546-4407
loganmac22@gmail.com
wilsonranchhunts.com

We strive to take a limited number of hunters and
 impose a minimum age limit of 4.5 years for bucks to be harvested.
 Turkey bow and shotgun hunts are also available.

Friday, June 8, 2018

EVENT NO. 9

KANSAS STATE CLASS DOUBLES

50 PAIR DOUBLES

Starting at 9:00 A.M.

\$1,200 FRIENDS OF THE KTA ADDED MONEY

Entry \$32.56

~ CLASS OPTIONS ~

Class Purse (60-40). 20.00

50's 5.00 per 50 (2) (60-40). 10.00

Lewis Class - 3 Classes (60-40) 20.00

ATA Gun Club Lewis 20.00

Split 50/50 gun club fund/shooter Three divisions 60/40

Trophies

In State - 14 Trophies

Class AAA-AA-A-B-C-D

High Lady I

High Lady II

High Junior

High Junior Gold

High Sub-Junior

High Sub Veteran

High Veteran

High Senior Veteran

Trophies

Out of State - 14 Trophies

Class AAA-AA-A-B-C-D

High Lady I

High Lady II

High Junior

High Junior Gold

High Sub-Junior

High Sub Veteran

High Veteran

High Senior Veteran

\$1,200 FRIENDS OF THE KTA ADDED MONEY

Kansas State Class Doubles

Kansas and Out of State Class Champion. . \$100 each

Awarded to high scores regardless of category.

EVENT NO. 10
HALL OF FAME HANDICAP
100 HANDICAP TARGETS

Entry \$32.56

~ OPTIONS ~

50's 10.00 per 50 (1-2,2-3,3-4) (50-30-20).....	30.00
Yardage Group Purse (4) (50-30-20).....	20.00
Purse - Total 100 (40/30/20/10).....	20.00
Lewis Class - 3 Classes (60-40).....	20.00
*KTA Hall of Fame	20.00
ATA Gun Club Lewis.....	20.00
Split 50/50 gun club fund/shooter	
Three divisions 60/40	

KTA Hall of Fame Lewis - The KTA Hall of Fame is a separate entity from the KTA. The Hall of Fame receives no revenue from the KTA. This KTA Hall of Fame Lewis helps provide funding for KTA Hall of Fame projects. We encourage you to participate.

*NOTE: \$5.00 of the entry will be donated to the KTA Hall of Fame and \$5.00 will be placed in a Lewis Class Purse.

3 Classes - 1 place each class.

TROPHIES

In State - 18 Trophies

- Champion
- Runner-up
- Winner & Runner-up
- Each Yardage Group
- (18-21.5) (22-24.5) (25-26.5) (27)
- High Lady I
- High Lady II
- High Junior
- High Junior Gold
- High Sub-Junior
- High Sub Veteran
- High Veteran
- High Senior Veteran

TROPHIES

Out of State - 18 Trophies

- Champion
- Runner-up
- Winner & Runner-up
- Each Yardage Group
- (18-21.5) (22-24.5) (25-26.5) (27)
- High Lady I
- High Lady II
- High Junior
- High Junior Gold
- High Sub-Junior
- High Sub Veteran
- High Veteran
- High Senior Veteran



104TH TEXAS STATE SHOOT

**July 3-8
2018**

Hosted By

**NATIONAL SHOOTING
COMPLEX**

5931 Roft Road
San Antonio, TX 78253

Presquad on PreSquad.Com
April 15 thru June 28

Program Available Online at
TexasTrap.Com Early April
For Camping Information
Olivia Gracia

NSC Administrative Assistant
210-688-3371, Ext 138
210-254-1520 (Direct)
nscriv@nssa-nsca.com

- 1,400 REGISTERED TARGETS
- 1,100 ALL AMERICAN TARGETS
- MATCHING IN AND OUT OF STATE TROPHIES
- MATCHING ATA CHAMPIONSHIP TROPHIES
- \$27,500 IN TROPHIES AND ADDED MONEY
- BAG OF MONEY SHOOTOFF AFTER LAST EVENT ON FRIDAY.

Our Trophies are a Hit.

**STERLING
CUT GLASS**

The Enduring Mark of Champions



For more information,
contact:

HAYLEY HILL
National Accounts
513.257.8090

hhill@sterlingcutglass.com
www.sterlingcutglass.com

**PROUD SPONSOR & TROPHY SUPPLIER
OF THE KANSAS STATE SHOOT!**

Cox Motor Company, Inc
427 Cobra Drive
Pleasanton, KS 66075



PLEASANTON, KS

(913) 352-8521

www.coxmotor.com

Family Owned and Operated
Since 1946

Jesse Secret
President

T&F[®] TRAP & FIELD

Since
1890

**The Official
Magazine
of the ATA**



- In-depth coverage of Satellite & State Shoots plus more.
- How-to columns by the best in the industry.
- Interviews, photos, and lots of target presentations.
- The ATA community's go-to magazine.

**Order Your
TRAP & FIELD Subscription
TODAY!**

Call 618-449-2224 Ext. 134
Email circulation@trapandfield.com

WWW.TRAPANDFIELD.COM

2018



GUN CLUB RAFFLE

PROCEEDS TO
BENEFIT ATA
GUN CLUB

ENTER FOR A CHANCE TO WIN A

KOLAR PRESTIGE TRAP LP
COMBO

TICKETS \$20 EACH
LIMITED NUMBER OF
TICKETS AVAILABLE

RAFFLE ENDS AUGUST 10, 2018 AT NOON!

CONTACT YOUR ATA STATE DELEGATE, ATA STATE SECRETARY,
OR THE ATA OFFICE: KLONG@SHOOTATA.COM OR 618-449-2224 EXT. 104



UPCOMING SHOOTS

presented by the



U.S. Open
May 30-June 3, 2018



AIM Grand National
Youth Trapshooting Championships
July 27-31, 2018



Grand American World
Trapshooting Championships
August 1-11, 2018



ALL SHOOTS HELD IN SPARTA, ILLINOIS AT THE WORLD SHOOTING & RECREATIONAL COMPLEX

Saturday, June 9, 2018

EVENT NO. 12

KANSAS STATE SINGLES CHAMPIONSHIP

Starting at 8:00 A.M.

200 16-YARD TARGETS

\$2700 Friends of the KTA Added Money

Entry \$65.12

~ CLASS OPTIONS ~

Class Purse (60-40) 20.00

50's 5.00 per 50 (4) (60-40) 20.00

Lewis Class - 3 Classes (60-40) 20.00

ATA Gun Club Lewis 20.00

Split 50/50 gun club fund/shooter

Three divisions 60/40

In State - 16 Trophies

Champion*

Runner-up*

Class (AAA-AA-A-B-C-D)*

High Lady I*

High Lady II*

High Junior*

High Junior Gold*

High Sub-Junior*

High Sub Veteran*

High Veteran*

High Senior Veteran*

Out of State - 16 Trophies

Champion

Runner-up

Class AAA-AA-A-B-C-D

High Lady I

High Lady II

High Junior

High Junior Gold

High Sub-Junior

High Sub Veteran

High Veteran

High Senior Veteran

*ATA Trophies

\$2,700 FRIENDS OF THE KTA ADDED MONEY

KS Singles Championship

Kansas and Out of State Champion \$500 each

Kansas and Out of State Runner-up \$250 each

Kansas and Out of State Class Champion . . . \$100 each

Awarded to high scores regardless of category.

Sunday, June 10, 2018

EVENT NO. 13

KANSAS STATE DOUBLES CHAMPIONSHIP

Starting at 9:00 A.M.

50-PAIR DOUBLES

\$1900 FRIENDS OF THE KTA ADDED MONEY

Entry \$32.56

~ CLASS OPTIONS ~

Class Purse (60-40) 20.00

10.00 per 25 pair(60-40). 20.00

Lewis Class - 3 Classes (60-40) 20.00

ATA Gun Club Lewis 20.00

Split 50/50 gun club fund/shooter

Three divisions 60/40

In State - 16 Trophies

Champion*

Runner-up*

Class (AAA-AA-A-B-C-D)*

High Lady I*

High Lady II*

High Junior*

High Junior Gold*

High Sub-Junior*

High Sub Veteran*

High Veteran*

High Senior Veteran*

Out of State - 16 Trophies

Champion

Runner-up

Class AAA-AA-A-B-C-D

High Lady I

High Lady II

High Junior

High Junior Gold

High Sub-Junior

High Sub Veteran

High Veteran

High Senior Veteran

*ATA Trophies

\$1900 FRIENDS OF THE KTA ADDED MONEY

KS Doubles Championship

Kansas and Out of State Champion \$200 each

Kansas and Out of State Runner-up \$150 each

Kansas and Out of State Class Champion . . . \$100 each

Awarded to high scores regardless of category.

KIOWA COUNTY GUN CLUB

100 Target Program 1st Sunday of each month at 1:00

For practice or to book private shoots contact us at
(620) 723-3101 or (620) 546-4193

Located on south end of
Greensburg Industrial Park
Greensburg, KS 67054

Harlan Campbell Jr's Shooting Instructions

"SHOOTING BETTER IS A CHOICE"



Harlan Campbell Jr.
P.O. Box 562-408 Plum
Tribune, Kansas 67879
CELL: 620-376-8787
stubbleduck1@Yahoo.com
www.harlancampbelljr.com

REMINGTON
KRIEGHOFF
RANDOLPH RANGER
SHOT-KAM
WENIG'S GUN STOCKS

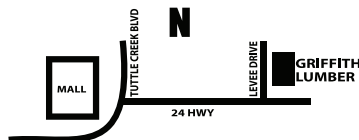
POLARIS
HI VIZ

GRIFFITH LUMBER & HARDWARE

SERVING MANHATTAN SINCE 1911

- LUMBER
- PLUMBING
- SIDING
- INSULATION
- HARDWARE
- CABINETS
- WALLPAPER
- DOORS
- ROOFING
- TOOLS
- WINDOWS
- PLYWOOD
- ELECTRICAL
- PAINT
- KITCHEN & BATH

EVERYTHING
FOR YOUR HOME



LOCAL
FREE
DELIVERY



OPEN
7 DAYS
A WEEK

Neal Helmick says Good Luck to all shooters!!

785-776-4104
820 LEVEE DRIVE • MANHATTAN, KS



2018 REGISTERED SHOOT DATES

PROGRAMS AVAILABLE WWW.KCTRAPS.COM

KANSAS CITY
TRAPSHOOTERS
ASSOCIATION
6420 NE 176TH ST
SMITHVILLE, MO
WWW.KCTRAPS.COM

TUES & WEDS
4PM-9PM
SAT & SUN
11AM-5PM
Kcta.pratt@gmail.com

MARCH 24-25 COOKIE SHOOT

APRIL 7-8 REGISTERED SHOOT

MAY 5-6 WESTERN ZONE SHOOT

MAY 26-27 BILL LYONS MEMORIAL
SHOOT

JUNE 16-17 REGISTERED SHOOT

JULY 4- FIRECRACKER SHOOT

JULY 7-8 ANNIVERSARY SHOOT

JULY 28-29 SUMMER SPECTACULAR

SEPT 1- LABOR DAY TOURNAMENT

OCT 6-7 REGISTERED SHOOT
NOVEMBER 4- REGISTERED SHOOT

Sunday, June 10, 2018

EVENT NO. 14

KANSAS STATE HANDICAP CHAMPIONSHIP

100 HANDICAP TARGETS

\$2500 Friends of the KTA Added Money

Entry \$32.56

~ OPTIONS ~

50's 10.00 per 50 (1-2,-2-3,3-4) (50-30-20)	30.00
Yardage Group Purse (4) (50-30-20)	20.00
Purse - Total 100 (40/30/20/10)	25.00
Lewis Class - 3 Classes (60-40)	20.00
*ATA HOF Contributor Purse	10.00
Chalkboard Special Event (40/30/20/10) (70-30)	20.00
ATA Gun Club Lewis	20.00
Split 50/50 gun club fund/shooter Three divisions 60/40	

*(Last Entries accepted until 10:00 a.m. Sunday - Event
bidding closes prior to Sunday Handicap)*

\$2500 FRIENDS OF THE KTA ADDED MONEY

KS Handicap Championship

Kansas and Out of State Champion	\$500 each
Kansas and Out of State Runner-up	\$250 each
Kansas and Out of State 3rd thru 6th Place	\$125 each
Awarded to high scores regardless of category.	

*Note: \$5.00 of the entry will be donated to the ATA Hall of Fame and \$5.00 will be placed in a Lewis Class Purse: 4 classes, 1 place each class.

Event No. 14 Trophy List

TROPHIES

In State - 22 Trophies

Champion*
Runner-up*
ATA (3rd, 4th, 5th, & 6th)*
Winner & Runner-up Each
Yardage Group
(18-21.5) (22-24.5)
(25-26.5) (27)
High Lady I*
High Lady II*
High Junior*
High Junior Gold*
High Sub-Junior*
High Sub Veteran*
High Veteran*
High Senior Veteran*

Out of State - 22 Trophies

Champion
Runner-up
3rd, 4th, 5th & 6th,
Winner & Runner-up Each
Yardage Group
(18-21.5) (22-24.5) (25-26.5)
(27)
High Lady I
High Lady II
High Junior
High Junior Gold
High Sub-Junior
High Sub Veteran
High Veteran
High Senior Veteran

*Denotes ATA Trophies

Hall of Fame Contributor Award Trophy Courtesy of
SHAMROCK LEATHERS



MASSEY'S FINE GUNS

Buy - Sell - Trade

Consign - Gunsmithing

Adjustable combs

Buttplates - Wood & Metal

Refinishing

Shawn Massey - Owner

215 Sequoyah St.

Satanta, Ks. 67870

shotgun@pld.com

masseysfineguns.com

620-952-1547



LIBERAL GUN CLUB

Contact: Greg Standard
620-629-5410

SHOOT DATES 2018

April 15 May 13 October 28

Hays City Sportmens Club

Hays, KS www.shoothcsc.net

Shooting Trap On Monday Nights Starting At 7:00 P.M.

Registered Shoots: April 14-15 October 20-21

For Information Call:

Randy Davis (785) 259-4957, Julius Windholz (785) 639-5254 or Roy Rathbun (785) 623-9477

Located From I-70, Exit 157, North 1/8 Mile (sign posted)

CEDAR HILL GUN CLUB

AND

SPORTING CLAYS

FAMILY OWNED & OPERATED FOR 55 YEARS
OPEN THURSDAY - SUNDAY

785-843-8213

- All Automatic Sporting Clay Course
- 5 Pat Traps 3 Lighted Fields
- All Voice Release Traps
- Leagues - Reg Shoots - Fundraisers

REGISTERED SHOOTS: APRIL 8, MAY 6, JUNE 3, JULY 8, AUGUST 5

Visit us at: www.cedarhillgunclub.homestead.com

ADDITIONAL TROPHIES

Events 12-13-14

High All Around Champion - In State*

Runner-Up, AAA, AA,A,B,C,D, High Lady I, High Lady II,
High Junior, High Junior Gold, High Sub-Junior, High Sub-Veteran,
High Veteran, High Senior Veteran

High All Around Champion - Out of State

Runner-Up, AAA, AA,A,B, C,D, High Lady I, High Lady II,
High Junior, High Junior Gold, High Sub-Junior, High Sub-Veteran,
High Veteran, High Senior Veteran

Events 4-10, 12, 13 and 14

HOA-In State

Champion, AAA, AA,A,B,C,D, High Lady I, High Lady II,
High Junior, High Junior Gold, High Sub-Junior, High Sub-Veteran,
High Veteran, High Senior Veteran

HOA-Out Of State

Champion, AAA, AA,A,B,C,D, High Lady I, High Lady II,
High Junior, High Junior Gold, High Sub-Junior, High Sub-Veteran,
High Veteran, High Senior Veteran

Special Awards

President's Award - Donated by Rob Taylor - A special award will be made to the KTA President or Past President who has the highest score in Event 12, Kansas State Singles Championship.

Trophy Notes

To be eligible for the awards described below, you must fill out a form at the Classification Table and turn in to a cashier before event starts.

Event 12

Husband & Wife—In State

Husband & Wife—Out of State

2 in a Family—In State

2 in a Family—Out of State

2018 Kansas State Teams

Based on 2017 averages

Men's 1st		Veteran	
Rob M. Taylor (Captain)	96.20%	Kenneth Johnston (Captain)	94.03%
Jerrold Lies	94.90%	Ronald Beach	92.20%
Bruce Davis	94.81%	Julius Windholz	92.04%
Shawn Massey	94.09%	Roy Rathbun	90.80%
Jesse Secrest	93.90%	Randy Davis	86.28%
Men's 2 nd		Sr. Veteran Team	
Caleb Fischer	93.50%	Rich L McAllaster (Captain)	92.36%
Richard S Schooler	93.35%	Virgil Tucker	92.13%
Gerald Mies	92.60%	Larry Zerngast	90.67%
Fred Smith	92.08%	Junior	
Jeff King	91.97%	Rowdy Snook(Captain)	92.42%
		Hunter Secrest	91.79%
		Zane Kay	90.31%
		Eric Black	82.07%
Ladies		Sub-Junior	
Beccy Landgraf (Captain)	88.63%	Scott Owen (Captain)	89.95%
Audrey George	88.11%	Xander Winchel	85.63%
Mary Davis	82.52%	Evan Selbe	85.15%
Gloria Sims	82.21%		
Juania Gale	81.03%		

Kansas Members

2018 ATA All-American Teams

(Based on target year 2017)

Men's first team
Harlan Campbell Jr. (Captain)

Men's 2nd team
Rob Taylor

Junior 2nd team
Rowdy Snook

Veteran 2nd team
Greg Hissem
Kenneth Johnston

Sr. Veteran 2nd team
Rich L McAllaster

STATE TEAM AWARDS

First time members of all state teams will be presented with a beautiful designed Sterling Silver Belt Buckle. Previous buckle winners will be award a beautifully designed Patch.

Attention Kansas Shooters

KANSAS STATE TEAM APPLICATION

Application for Kansas State Trapshooting Team. All Shooters

Complete and mail by December 1 to your state ATA Delegate: David Rhoads, 3905 Julia Circle, Manhattan, KS 66503

TARGET YEAR _____

Name _____
 Address _____ City _____ Zip Code _____

Special Category _____ Age _____
 Date of Birth _____ ATA # _____

	<u>Number of</u> <u>Kansas Targets Shot</u>	<u>Average</u>
16 Yard Targets	_____	_____
Handicap	_____	_____
Doubles	_____	_____
Kansas Overall Targets	_____	_____

(Total of above averages divided by 3)

Are you an ATA member in good standing? Yes _____ No _____

Requirements:

ONLY KANSAS targets will count towards STATE TEAM recognition

Did you shoot the Championship Singles, Championship Doubles and Championship Handicap events at the Kansas State Shoot this year? Yes _____ No _____ (this only applies if the Championship events are shot on Saturday and Sunday)

A **ZONE 400** is required for state team recognition.

Did you shoot **ANY** Kansas **ZONE** Shoot consisting of the Zone Singles, Zone Doubles, and Zone Handicap? (400 Targets)
 Any combination or all at one Zone shoot. You may shoot all or any Zone. Yes _____ No _____

	<u>Club Location</u>	<u>Score</u>
200 Singles Championship	_____	_____
100 Handicap Championship	_____	_____
100 Doubles Championship	_____	_____

Any HIGHER HONOR ie: All American Team placement, automatically makes the **KANSAS STATE ALL AMERICAN TEAM** provided the Kansas State Championship 400 targets are shot and state team requirements were not met.

STATE TEAM REQUIREMENTS

Men's Team (10)	1500 Singles	1000 Handicap	1000 Doubles
Ladies Team (5)	1500 Singles	1000 Handicap	1000 Doubles
Veteran Team (5)	1500 Singles	1000 Handicap	1000 Doubles
Sr. Veteran Team (5)	1000 Singles	1000 Handicap	500 Doubles
Junior Team (5)	1000 Singles	500 Handicap	500 Doubles
Sub Junior Team (5)	1000 Singles	500 Handicap	500 Doubles

Signed _____ Date _____

IT'S BACK!

The Truth Is Out There.



HODGDON
THE COMPANY THAT
BROUGHT YOU THE
ORIGINAL **CLAYS**
CLEAN BURNING POWDER



SINGLES CHAMPION

1923 - W. G. Stephenson	198x200	1970 - Cliff Sexton	200x200
1924 - Rex Hill	187x200	1971 - Kenneth Chmidling	200x200
1925 - Ray Govenins	195x200	1972 - Norm Bastion	200x200
1926 - J. W. Floyd	196x200	1973 - Ron Mayfield	199x200
1927 - Joe Burns	198x200	1974 - Phil Arnett	200x200
1928 - Joe Davison	196x200	1975 - Gary Brehm	200x200
1929 - Fred R. Etchen	197x200	1976 - Carl Toothman	200x200
1930 - Guy Von Schritlz	197x200	1977 - Roger Smith	199x200
1931 - Fred R. Etchen	197x200	1978 - N. E. McCorkle	200x200
1932 - Guy Von Schritlz	200x200	1979 - N. E. McCorkle	200x200
1933 - Guy Von Schritlz	200x200	1980 - Darnell Spriggs	200x200
1934 - P. E. Morris	200x200	1981 - Roger Smith	200x200
1935 - A. H. Rose	193x200	1982 - Bernard Waner	200x200
1936 - C. B. McDowell	197x200	1983 - Don Kerschen	200x200
1937 - Fred R. Etchen	196x200	1984 - Glenn Moote	199x200
1938 - Rudy Etchen	196x200	1985 - Bernard Waner	200x200
1939 - Rudy Etchen	198x200	1986 - Larry Tagtmeyer	199x200
1940 - A. H. Rose	198x200	1987 - Greg Hissem	200x200
1941 - Jim Andrews	199x200	1988 - Roger Smith	199x200
1942 - Earl Hawkey	199x200	1989 - Greg Hissem	200x200
1943 - C. B. McDowell	196x200	1990 - Dale Richardson	196x200
1944 - Gus Carpenter	99x100	1991 - Bernard Waner	200x200
1945 - Carl Lortscher	100x100	1992 - Kent Evans	199x200
1946 - H. H. Stecher	99x100	1993 - Steve Nylen	199x200
1947 - Walter Mulanax	193x200	1994 - Harlan Campbell, Jr.	200x200
1948 - Vern Brownlee	199x200	1995 - Dale Richardson	200x200
1949 - Harvey H. Blair	199x200	1996 - Kent Evans	200x200
1950 - Florian Polcyn	198x200	1997 - Harlan Campbell, Jr.	200x200
1951 - M.F. Kaelin	198x200	1998 - Harlan Campbell, Jr.	200x200
1952 - Iva Pembridge	199x200	1999 - Greg Hissem	200x200
1953 - Florian Polcyn	198x200	2000 - Mike Horinek	200x200
1954 - James Rexroat	195x200	2001 - Harlan Campbell Jr	200x200
1955 - E. Michael Wayland	199x200	2002 - Bernard Waner	200x200
1956 - Morris Carpenter	197x200	2003 - Harvey Woodmansee	200x200
1957 - Cecil Kleppe	200x200	2004 - Larry Tagtmeyer	200x200
1958 - Iva Jarvis	199x200	2005 - Harlan Campbell Jr.	200x200
1959 - Bill Morris	200x200	2006 - Michael Horinek	199X200
1960 - C. E. Barnhart	199x200	2007 - Rich McAllaster	200x200
1961 - Hap Elliott	199x200	2008 - Harlan Campbell, Jr.	200x200
1962 - Wayne Wilhite	199x200	2009 - Tyson Adams	200x200
1963 - Wayne Rowland	200x200	2010 - Larry Schmidt	200x200
1964 - Wayne Rowland	200x200	2011 - Harlan Campbell, Jr.	200x200
1965 - A. R. Frigon	199x200	2012 - Don Budd	200x200
1966 - Steve Vogli	199x200	2013 - Weston Workman	200x200
1967 - Wayne Everhart	200x200	2014 - Larry Schmidt	199x200
1968 - Bob Ristow	200x200	2015 - Harlan Campbell, Jr	200x200
1969 - Joe Hancock	200x200	2016 - Harlan Campbell, Jr	199x200
		2017 - Harlan Campbell, Jr	199x200

HANDICAP CHAMPION

1923 - Joe P. Burns	93x100	1970 - James Brown-(22.5)	98x100
1924 - P. K. Cairns	87x100	1971 - Cliff Sexton-(27)	99x100
1925 - Fred Clarke	99x100	1972 - Terry Mitchell-(25)	99x100
1926 - Russel B. Reed	95x100	1973 - Calvin Veal (22.5)	99x100
1927 - C. F. Everhart	95x100	1974 - Dean Toothman-(23)	97x100
1928 - J. G. Forney	97x100	1975 - Vincent Schmidling	98x100
1929 - Chas. Etchen	97x100	1976 - Dale Busby-(22)	99x100
1930 - Walt Wolf-(22)	99x100	1977 - Wayne Euker-(25)	96x100
1931 - John Pratt-(19)	100x100	1978 - John Clasen-(23)	98x100
1932 - Fred Etchen-(25)	95x100	1979 - Bob Wesley-(20.5)	99x100
1933 - Art Wolf-(23)	94x100	1980 - Roger Smith-(27)	99x100
1934 - E. A. Hoag-(20)	98x100	1981 - Roger Smith (27)	97x100
1935 - Otto Keihl, Jr.-(18)	94x100	1982 - Wm. Martinez-(21)	99x100
1936 - H. H. Stecher-(23)	95x100	1983 - Eldon Johnson-(19.5)	96x100
1937 - Otto Keihl, Jr.-(20)	97x100	1984 - Joe Worley-(22)	100x100
1938 - O. M. Goodrich	98x100	1985 - James Lyon-(18)	98x100
1939 - Tom P. Palmer-(21)	98x100	1986 - Everett Kimball-(23)	98x100
1940 - J. P. Huckabay-(19)	94x100	1987 - Bill Morris-(25)	99x100
1941 - Floyd Hollenbeck	97x100	1988 - Larry Herber-(24.5)	98x100
1942 - Carl Lortscher-(23)	97x100	1989 - John McQueen-(20)	96x100
1943 - Harvey H. Blair-(23)	95x100	1990 - Kent Evans-(27)	98x100
1944 - Morris Carpenter-(20)	50x50	1991 - Kevin Duncan-(22)	98x100
1945 - R. O. Bills-(21)	47x50	1992 - Roger Smith-(27)	98x100
1946 - J. P. Huckabay-(20)	94x100	1993 - Patrick O'Bryon-(22.5)	99x100
1947 - Les Ingram-(22)	99x100	1994 - Jerald Hillman-(21)	98x100
1948 - Herb Wetzel (18)	100x100	1995 - Bill Wyant-(22.5)	98x100
1949 - Earl Welch-(18)	96x100	1996 - Michael O'Bryon-(22)	97x100
1950 - V. M. Bauman-(19)	100x100	1997 - Brian Smith-(22)	100x100
1951 - H. A. Carey-(18)	95x100	1998 - Johnny E. Lister-(20)	97x100
1952 - R. W. Funk-(19)	99x100	1999 - Mike Horinek-(20)	95x100
1953 - J. R. Johnson-(19)	95x100	2000 - Harvey Woodmansee(23.5)	98x100
1954 - Wm. D. Seitz-(24)	97x100	2001 - Paul Keller-(26)	100x100
1955 - Terry Mitchell-(20)	98x100	2002 - Harlan Campbell, Jr.-(27)	99x100
1956 - Herman Schaller	100x100	2003 - Wayne Euker-(21)	96x100
1957 - Bill Davis-(21)	98x100	2004 - Beccy Landgraf-(21.5)	98x100
1958 - Lawrence Conoway	99x100	2005 - Greg Hissem-(27)	98x100
1959 - Gerald Bond-(21)	100x100	2006 - Harlan Campbell, Jr.-(27)	98x100
1960 - Tom Kincaid-(21)	99x100	2007 - Ron Watson-(27)	99x100
1961 - V. L. Billings-(20)	97x100	2008 - Harlan Campbell, Jr.-(27)	99x100
1962 - Robert Galliger-(22)	97x100	2009 - Larry Tagtmeyer-(27)	99x100
1963 - Ray Reimer-(20)	96x100	2010 - Travis Crist-(22.5)	97x100
1964 - Bob Phillips-(20)	98x100	2011 - Rob Taylor (27)	97x100
1965 - Bruce Guinn-(22)	99x100	2012 - Casey Bock (19)	100x100
1966 - E. B. Lamb-(20)	99x100	2013 - Gordon Ross (25.5)	98x100
1967 - Justin Erker-(23)	99x100	2014 - Kenneth Johnston (27)	98x100
1968 - R. L. Hancock-(22)	99x100	2015 - Greg Hissem (27)	98x100
1969 - Dennis O'Bryon-(19)	98x100	2016 - Steve Wittrig (27)	98x100
		2017 - Hunter Secrest (22.5)	98x100

DOUBLES CHAMPION

1923 - W. G. Stephenson	45x50	1971 - Wayne Rowland	97x100
1924 - Fred R. Etchen	42x50	1972 - Phil Arnett	97x100
1925 - Fred R. Etchen	48x50	1973 - Leslie Slattery	98x100
1926 - F. E. Floyd	90x100	1974 - Brooks Gilbert	99x100
1927 - C. B. McDowell	91x100	1975 - Roger Smith	94x100
1928 - Elmer Samson	92x100	1976 - Roger Smith	98x100
1929 - F. E. Floyd	93x100	1977 - Rodney Lindsten	98x100
1930 - Fred R. Etchen	95x100	1978 - Roger Smith	98x100
1931 - Fred R. Etchen	94x100	1979 - Roger Smith	97x100
1932 - Roy Schoeb	97x100	1980 - John Robinson	99x100
1933 - C. B. McDowell	96x100	1981 - Phil Frigon	97x100
1934 - Fred R. Etchen	96x100	1982 - Charles Schwab	98x100
1935 - Fred R. Etchen	91x100	1983 - Mark Warrell	96x100
1936 - Fred R. Etchen	93x100	1984 - Mark Warrell	96x100
1937 - Otto Keihl	95x100	1985 - Ken Blasi	98x100
1938 - Fred R. Etchen	95x100	1986 - N. E. McCorkle	97x100
1939 - Fred R. Etchen	95x100	1987 - N. E. McCorkle	97x100
1940 - T. P. Palmer	97x100	1988 - Bernard Waner	99x100
1941 - E. W. Carr	96x100	1989 - Ron Watson	98x100
1942 - C. B. McDowell	87x100	1990 - Rob Taylor	97x100
1943 - Cle Bratton	48x50	1991 - Bernard Waner	100x100
1944 - W. C. Huffman	47x50	1992 - Kent Evans	100x100
1945 - H. H. Stecher	47x50	1993 - Roger Smith	98x100
1946 - John DeLong	93x100	1994 - Kent Evans	98x100
1947 - Odd Williams	88x100	1995 - Dale Richardson	98x100
1948 - Hilton Frost	95x100	1996 - Jeffrey Slattery	98x100
1949 - Hilton Frost	94x100	1997 - Harlan Campbell, Jr.	100x100
1950 - H. H. Stecher	94x100	1998 - Kent Evans	99x100
1951 - Skipper Williams	97x100	1999 - George Maskrid	100x100
1952 - Skipper Williams	97x100	2000 - Ron Watson	98x100
1953 - Skipper Williams	97x100	2001 - Rob Taylor	98x100
1954 - Mike Kaelin	95x100	2002 - Harlan Campbell, Jr.	100x100
1955 - Iva Pembridge	96x100	2003 - Harlan Campbell, Jr.	99x100
1956 - Skipper Williams	94x100	2004 - Rob Taylor	99x100
1957 - Skipper Williams	91x100	2005 - Rob Taylor/Harlan Campbell Jr.	99x100
1958 - Steve Vogli	94x100	2006 - Harlan Campbell, Jr.	99x100
1959 - C. E. Barnhart	98x100	2007 - Pat Farrington	100x100
1960 - Iva Jarvis	92x100	2008 - Ron Watson	98x100
1961 - Steve Vogli	93x100	2009 - Harlan Campbell, Jr.	100x100
1962 - Steve Vogli	93x100	2010 - Harlan Campbell, Jr.	99x100
1963 - Steve Vogli	95x100	2011 - Harlan Campbell, Jr.	99x100
1964 - Steve Vogli	94x100	2012 - Harlan Campbell, Jr.	99x100
1965 - Bill Morris	98x100	2013 - Harlan Campbell, Jr.	99x100
1966 - Bob Kapler	96x100	2014 - Harlan Campbell, Jr.	100x100
1967 - Bill Morris	95x100	2015 - Jerrod Lies	99x100
1968 - Leslie Slattery	98x100	2016 - Harlan Campbell, Jr.	99x100
1969 - Justin Erker	97x100	2017 - Harlan Campbell, Jr.	98x100
1970 - Rusty Anderson	94x100		

HIGH ALL AROUND CHAMPION

1923 - W.G. Stephenson	328x350	1970 - Joe Hancock	382x400
1924 - Frank Luther	299x350	1971 - Richard Cannady	384x400
1925 - Fred R. Etchen	331x350	1972 - Terry Mitchell	392x400
1926 - J.G. Forney	379x400	1973 - Bernard Waner	391x400
1927 - Gus Payne	376x400	1974 - Phil Frigon	388x400
1928 - Joe Davison	378x400	1975 - Roger Smith	388x400
1929 - Fred R. Etchen	379x400	1976 - Roger Smith	390x400
1930 - Chas Cooper	363x400	1977 - Roger Smith	386x400
1931 - Fred R. Etchen	385x400	1978 - Roger Smith	394x400
1932 - Fred R. Etchen	385x400	1979 - Roger Smith	395x400
1933 - Guy Von Schritlz	383x400	1980 - N.E. McCorkle	395x400
1934 - Fred R. Etchen	391x400	1981 - Roger Smith	392x400
1935 - Fred R. Etchen	373x400	1982 - Bernard Waner	383x400
1936 - Harvey H. Blair	376x400	1983 - John Doty	386x400
1937 - Fred R. Etchen	386x400	1984 - Larry Tagtmeyer	391x400
1938 - Fred R. Etchen	381x400	1985 - Mark Warrell	389x400
1939 - Tom Palmer	382x400	1986 - Larry Tagtmeyer	391x400
1940 - Earl Hawkey	379x400	1987 - Bill Morris	392x400
1941 - A.H. Rose	388x400	1988 - Roger Smith	392x400
1942 - A.H. Rose	371x400	1989 - Roger Smith	388x400
1943 - Harvey H. Blair	334x350	1990 - Steve Nylan	380x400
1944 - C.H. Weaver	191x200	1991 - Bernard Waner	394x400
1945 - C.H. Weaver	189x200	1992 - Roger Smith	395x400
1946 - Tom Palmer	382x400	1993 - Kent Evans	390x400
1947 - Skipper Williams	363x400	1994 - Harlan Campbell, Jr.	395x400
1948 - Hilton Frost	390x400	1995 - Bernard Waner	390x400
1949 - Harvery H. Blair	380x400	1996 - Kent Evans	391x400
1950 - Wilford Betzer	386x400	1997 - Harlan Campbell, Jr.	397x400
1951 - M.F. Kaelin	379x400	1998 - Bernard Waner	390x400
1952 - Skipper Williams	386x400	1999 - George Maskrid	388x400
1953 - Henry Peters	375x400	2000 - Ron Watson	391x400
1954 - Mike Kaelin	378x400	2001 - Harlan Campbell, Jr.	392x400
1955 - Mike Kaelin	381x400	2002 - Harlan Campbell, Jr.	398x400
1956 - Si Darling	378x400	2003 - Harlan Campbell, Jr.	393x400
1957 - Skipper Williams	375x400	2004 - Harlan Campbell, Jr.	393x400
1958 - Steve Vogli	383x400	2005 - Harlan Campbell, Jr.	393x400
1959 - C.E. Barnhart	391x400	2006 - Harlan Campbell, Jr.	394x400
1960 - C.E. Barnhart	380x400	2007 - Pat Farrington	396x400
1961 - Steve Vogli	385x400	2008 - Harlan Campbell, Jr.	396x400
1962 - James Rexroat	378x400	2009 - Harlan Campbell, Jr.	394x400
1963 - Robert Kapler	381x400	2010 - Harlan Campbell, Jr.	390x400
1964 - Leslie Slattery	377x400	2011 - Harlan Campbell, Jr.	395x400
1965 - Bill Morris	389x400	2012 - Rob Taylor	397x400
1966 - Steve Vogli	385x400	2013 - Harlan Campbell, Jr.	391x400
1967 - Bill Morris	384x400	2014 - Harlan Campbell, Jr.	394x400
1968 - Bob Ristow	392x400	2015 - Jerrod Lies	394x400
1969 - Dave Pestinger	387x400	2016 - Harlan Campbell, Jr.	394x400
		2017 - Harlan Campbell, Jr.	394x400

WOMENS SINGLES CHAMPION

1947 - Florence Mos	93x100	1995 - Susan Schwab	196x200
1948 - Florence Mos	97x100	1996 - Betty Wrestler	194x200
1949 - Iva Pembridge	97x100	1997 - Betty Wrestler	196x200
1950 - Iva Pembridge	94x100	1998 - Beccy Landgraf	191x200
1951 - Iva Pembridge	89x100	1999 - Roxanne Cummings	195x200
1952 - Iva Pembridge	199x200	2000 - Susan Schwab	195x200
1953 - Iva Pembridge	196x200	2001 - Susan Schwab	195x200
1954 - Iva Pembridge	100x100	2002 - Susan Schwab	192x200
1955 - Iva Pembridge	96x100	2003 - Susan Schwab	192x200
1956 - Iva Jarvis	97x100	2004 - Susan Schwab	192x200
1957 - Iva Jarvis	97x100	2005 - Beccy Landgraf	197x200
1958 - Iva Jarvis	100x100	2006 - Mary Davis	195x200
1959 - Gladys Pfof	94x100	2007 - Susan Schwab	195x200
1960 - Iva Jarvis	99x100	2008 - Shena O'Brien	190x200
1961 - Gladys Pfof	99x100	2009 - Susan Schwab	198x200
1962 - Gladys Pfof	190x200	2010 - Susan Schwab	196x200
1963 - Gladys Pfof	193x200	2011 - Caitlin Watts	191x200
1964 - Gladys Pfof	94x100	2012 - Caitlin Watts	195x200
1965 - Gladys Pfof	191x200	2013 - Kilee Hutchison	194x200
1966 - Iva Jarvis	193x200	2014 - Susan Schwab	193x200
1967 - Iva Jarvis	190x200	2015 - Gloria Sims	192x200
1968 - Jane Cannady	193x200	2016 - Audrey George	196x200
1969 - Opal Rowland	192x200	2017 - Susan Dauber	185x200
1970 - Margie Kirkpatrick	194x200		
1971 - Marcella Cook	198x200		
1972 - Carmelita Slattery	197x200		
1974 - Marcella Cook	195x200		
1975 - Iva Jarvis	196x200		
1976 - Iva Jarvis	196x200		
1977 - Betty Wrestler	196x200		
1978 - Marcella Cook	194x200		
1979 - Betty Wrestler	196x200		
1980 - Gladys Pfof	192x200		
1981 - Betty Wrestler	197x200		
1982 - Betty Wrestler	196x200		
1983 - Betty Wrestler	196x200		
1984 - Julie Jobson	195x200		
1985 - Betty Wrestler	195x200		
1986 - Betty Wrestler	195x200		
1987 - Betty Wrestler	195x200		
1988 - Betty Wrestler	197x200		
1989 - Susan Schwab	192x200		
1990 - Betty Wrestler	184x200		
1991 - Betty Wrestler	196x200		
1992 - Susan Schwab	194x200		
1993 - Betty Wrestler	196x200		
1994 - Betty Wrestler	197x200		



Iowa Park Trap Club

Iowa Park, Texas

Registered Shoot Dates

May 27 June 24 August 26

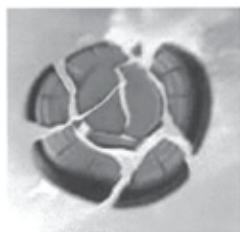
Zone III - Sept 21-22-23

Bob Johnson - 940-631-1453

Sonny Cook - 940-867-3223

Pat Thomason - 940-733-8905

OTSA



Oklahoma Trapshooters
would like to invite you to their
119th Oklahoma State Trapshoot
to be held in El Reno, OK
May 29th - June 3rd, 2018.

May 29th Tuesday: Aim State Championship

100S 100H 100D

May 30th Wednesday: 100S 100H 100D

May 31st Thursday: 100S 100H 100D

(Thursday & Friday's singles combine for a 200 target event)

June 1st Friday: 100S 100H 100D

June 2nd Saturday: 200S

June 3rd Sunday: 100H 100D

Programs: Ron Bliss countryequipment2@gmail.com

405-641-8979

Camping: Danny Elston ddelston@ymail.com

580-445-8244

Vendors: Roger Finkle 405-334-6052

Pres: Brian Northup 405-274-1771

www.otatrapandskeet.org

ATA Grand Slams by Kansans

Name	Nat'l Rank	State Rank	Date Recorded
Roger Smith	#18	#1	April 29, 1978
Mark Warrell	#31	#2	June 14, 1981
Charles Schwab	#80	#3	Sept. 16, 1989
Steve Nylan	#91	#4	July 19, 1990
Kent Evans	#101	#5	June 15, 1991
Larry Zerngast	#144	#6	Sept. 16, 1993
Billy Rink	#238	#7	July 8, 1999
Bernard Waner	#247	#8	May 29, 2000
Rob M. Taylor	#249	#9	June 23, 2000
Greg Hissem	#252	#10	July 11, 2000
Harlan Campbell, Jr.	#259	#11	Aug. 4, 2000
Kenneth (KJ) Johnston	#266	#12	June 7, 2001
Rich McAllaster	#287	#13	May 5, 2002
George Maskrid	#296	#14	July 21, 2002
Ron Watson	#345	#15	Sept. 3, 2005
Jim Hedgecock	#376	#16	July 7, 2007
Dean Dierksen	#378	#17	July 28, 2007
Martin Wilbur	#390	#18	July 17, 2008
Larry Tagtmeyer	#439	#19	June 5, 2012

ATA Grand Slam information courtesy of Trap & Field Magazine



SHOOTERS!

Plan Now to Attend the

KTA Summer Handicap - July 20-21-22

KTA Hall of Fame - August 24-25-26

KTA Fall Handicap September 28-29-30

KINSLEY GUN CLUB

Our 117th year of serving shooters!

"We hope YOU will come shoot with us this year"

May 5 - 6 - Western Zone
August 18-19 - The Kinsley Grand

500 Doubles - Saturday
BIG Handicap - Sunday

Practice Wednesday Evenings
100 Bird Trophy Shoot last Sunday Each Month

Larry Skelton, President

719 W 17th, Larned, KS 67550
620-285-5074

C & H Research

115 Sunnyside Dr
Lewis, KS 67552

Decot Glasses (including prescription), **New & Used Trap
Machines, Mercury Recoil Suppressors** (Dealer Inquiries Invited)



White Flyer Targets



Save BIG on shells and reloading supplies!

Frank O'Brien

PH: 888-324-5445 • E-MAIL: franko@gbta.net

*You are cordially invited to the 19th Annual
KTA Hall of Fame Banquet honoring Hall of
Fame members and enshrinees,
State Team members,
ATA All-American Team members,
directors, and officers.*

Friday, June 8, 2018

Cocktails 5:30

Dinner 6:30

KTA Hall of Fame

RSVP

RSVP by May 25, 2018

(Limited number of tickets available)

Number attending: _____

Check (Payable to KTA Hall of Fame)

enclosed for: _____

(\$30.00 no. attending)

Name(s)

Address correction if needed

_____ No, I will not be attending

Mail to: Darrell Hosler

14100 Meadow Lane

Leawood, KS 66224-4556

816-809-7181

SHAMROCK
Pride



Proud to win it. Proud to own it.
Proud to pass it on.



www.ShamrockLeathers.com 1-800-728-5184



Maloan's Restuarant would like to welcome everyone to the 2018 Kansas State Shoot. We are honored to be the caterer for this and all KTA events. "Good Luck and Good Shooting."

Kevin Maloan

BOCK FARMS, INC.

***Kenny & Nancy Bock
Tyler & Casey Bock***

**845 West 8th Street
Kingman, KS 67068**

Home: (620) 532-2260

Cell: (620) 532-6333

E-Mail: nkbock@gmail.com



KTA HALL OF FAME

Iva Jarvis	1974	Roy Weaver	1986
Ivan Bunker	1975	Wayne Everhart	1986
Tom Palmer	1976	Earl McCall	1987
Gladys Pfost	1977	Norman Olliff	1987
Wade Pfost	1977	C.E. Barnhart	1988
John Crane	1978	Bill Morris	1988
John DeLong	1978	Tom Massey	1988
Fred R. Etchen	1978	Larry Tagtmeyer	1989
Rudy Etchen	1978	Steve Vogli	1990
Glen Faulkner	1978	Lamoine Baldock	1991
Hilton Frost	1978	Bill Cassel	1991
M.F. Kaelin	1978	Barbara Smith	1992
R.E. Kirkpatrick	1978	Leslie Slattery	1993
C.B. McDowell	1978	Thomas Kincaid	1993
C.J. Neill	1978	N.E. McCorkle	1993
Florian Polcyn	1978	Leon Rickman	1994
James Rexroat	1978	Bernard Waner	1994
Abe Rose	1978	Loyd Jones	1994
Wayne Rowland	1978	Charles Schwab	1995
Dr. George Stoy	1978	Samuel Attkisson	1996
Francis Sutton	1978	Martin Wilbur	1997
N.J. Wener	1978	Ray Stareck	1998
Al Williams	1978	Frank O'Brien	1998
Dick Williams	1978	Mary O'Brien	1998
Skipper Williams	1978	W.D. Sietz	1998
Al Waner	1979	John Golay	1999
Marvin Kessler	1979	Harlan Campbell, Jr.	1999
C.J. Tomberlin	1979	Dale Richardson	1999
J.D. Rea	1979	Kent Evans	1999
H.H. Blair	1979	John Kasberger	1999
D.L. Bramblett	1979	Virgil Carson	2000
Phillip Arnett	1980	Greg Hissem	2000
Wayne Gray	1980	Wendall McAllaster	2000
Fred Brehm	1982	David A. Rhoads	2000
Charlie LaMaster	1982	Rob Taylor	2001
R.L. Hancock	1983	Larry Zerngast	2001
Cecil Kleppel	1983	Ron Watson	2001
Roger Smith	1983	Max Kirkpatrick	2002
JoAnn Yowell	1983	Richard R. McAllaster	2002
A.R. Frigon	1984	Steven F. Nelson	2002
Betty Wrestler	1984	Joe Randle	2002
Cliff Sexton	1985	Susan Schwab	2002
Bob Ballard	1985	Beccy Landgraf	2003
Jack Solomon	1986	Phil Frigon	2003
Robert Baker	1986	John Alexander	2004

KTA HALL OF FAME, Cont'd.

Rusty Anderson	2004	Eldon Stareck	2011
Jack York	2005	William Scott	2012
Arlo Sporer	2005	Billy Rink	2012
Steve Nylen	2005	Pete McMillon	2012
Jim Hedgecock	2006	Jim & Pat Overstreet	2013
Carmelita Slattery	2006	Roger Morgan	2013
Kenneth (KJ) Johnston	2007	Steve Wittrig	2013
Larry Schmidt	2007	Larry Westhoff	2013
Harold Schultz	2007	Mark Crist	2014
Gary Schultz	2007	Sandra McAllister	2015
Herb O'Bryon	2008	Donald Budd	2016
Mary O'Bryon Watson	2008	Tom Holman	2016
Gary Brehm	2008	Jim Moody	2017
Larry Skelton	2010	Lou Bateman	2017
Dale Davis	2010		

AMERICAN TRAP, SKEET & INTERNATIONAL TARGETS

A SHOOTING
TRADITION
SINCE 1892...



WHITE FLYER®
TARGETS

DIVISION OF REAGENT CHEMICAL & RESEARCH, INC.

For the name of your nearest White Flyer Distributor call:
East 800-423-6077 **Central** 800-647-2898 **West** 800-872-7888

or contact:
Phil Murray, Regional Sales Manager
1300 Post Oak Blvd., Suite 680 Houston, TX 77056
713-626-1843 800-322-PULL Fax: 713-963-0951



2018 Arkansas State Trapshooting Championships



91ST

14 Traps

AR STATE SHOOT

June 19 - 24, 2018

Over

\$50,000

Added Money,
Trophies & Prizes.

Added Money:
\$18,900 in State
\$6,100 out of State
\$3,600 AIM

Arkansas Game and
Fish Foundation
Shooting Sports Complex
Jacksonville, AR

2016 & 2017
Competition Factor of 3

Arkansas Handicap Championship Event
Handicap Jackpot

\$8,500

See program for more details



All American Points
Events 2-13
3 places per category



In State and Out of State Trophies all Events

www.ArkansasTrapShooting.org

2018 Kansas State Shoot Scores

Class _____ Yardage _____

Event	Score
#1 Shocker Singles - Tuesday	
#2 Jayhawk Handicap - Tuesday	
#3 Wildcat Doubles - Tuesday	
#4 Harlan Campbell, Jr - Singles - Wednesday*	
#5 Hunter Secrest - Handicap - Wednesday*	
#6 Harlan Campbell, Jr - Doubles*	
#7 Kansas State Class Singles - Thursday*	
#8 Clever Handicap - Thursday*	
#9 Kansas State Class Doubles - Friday*	
#10 Hall of Fame Handicap - Friday*	
#11 Hall of Fame Wolf - Friday	
#12 Kansas State Singles Championship - Saturday * **	
#13 Kansas State Doubles Championship - Sunday * **	
#14 Kansas State Handicap Championship - Sunday* **	
High All Around Total **	
High Overall Total *	

Anthony Gun Club



The Shadiest Club in The Country!



2018 SHOOTS

May 27th & 28th
July 4th
September 2nd & 3rd

**Home of 2017
Kansas Clay Target
State CHAMPIONS!!**

For More Information Contact:
Sid Burkholder @ 620-243-3588
Sandra Owen @ 620-842-2182

THE STOCK SHOP, INC.

Custom Gunsmithing

121 GATES AVE Kenyon, MN 55946



"Get 'r Done at The Stock Shop"

R.A.D. System
4-Way Adjustable Combs
Gunfitting
Hard & Soft-Top Combs
GRACOIL Systems

Tom Larkin
Ann Dee Larkin
Shop: 507-789-5523
Cell: 507-254-4694
Cell: 507-838-5318
www.thestockshop.net

Mercury Recoil Reducers
KICK-EZZ Pads
Laser Targeting System
Shamrock Leather
2 Sisters Magnetized Gun Rest

*Ask About our replacement adjustable comb hardware for
Browning and Beretta shotguns.*

**We're looking forward to serving you at
the 2018 Kansas State Shoot!**



The most highly recommended bed in America:

SHIPPED TO 50 STATES

**SLEEP BETTER, FEEL BETTER &
SHOOT BETTER!**
**GET YOURSELF A BETTER BED FOR
THAT RV OR CAMPER!**



Johnson's
FURNITURE & MATTRESS

TOLL FREE 1-855-710-1232
CELL 940-631-1453

3400 JACKSBORO HWY.
WICHITA FALLS, TX 76302



SHOOTERS!

Plan Now to Attend the

***KTA Summer Handicap
July 20-21-22***

***KTA Hall of Fame
August 24-25-26***

***KTA Fall Handicap
September 28-29-30***



**IT'S IN YOUR
NEXT ROUND,
AND THE ONE AFTER THAT.**

IT'S IN YOUR HOME ON THE RANGE.

Let's face it, spending a day plinking targets on the back 40 or sending lead 1,000 yds. to steel silhouettes isn't just something you do, it's who you are. At Cabela's, we feel the same way. That's why it's in our nature to support you with thousands of experts, more than 50 years of experience and the right gear to ensure your time at the range is always an exciting rush.

Cabela's

**IT'S IN
YOUR NATURE**

CABELAS.COM/KANSASCITY
CABELAS.COM/WICHITA